

HEARTLAND PROPERTIES

EXTENDED STAY APARTMENT ADVANTAGE

3 GREAT DANVILLE LOCATIONS



2200 N. Vermilion (North Danville)



1221 N. Logan (Medical District)



3816 Sonny Lane (North Danville)

Welcome to Heartland Properties
For over 40 years we have provided clean well cared for units at affordable rental rates for both apartments and houses in Danville, IL. We strive to give our tenants the best experience in quality, comfort and great locations. Whether you are looking for a long term rental, furnished housing or wanting to settle into a beautiful home, Heartland Properties has many options that will fit your wants and needs.

For Availability
www.HeartlandPropertiesInc.net

Leasing Agent:
Email: rachelle@heartlandproperties.net
Email: teri@heartlandproperties.net
Email: andrea@heartlandproperties.net

Office Manager:
Email: gayle@heartlandproperties.net

Owner:
Email: rick@heartlandproperties.net

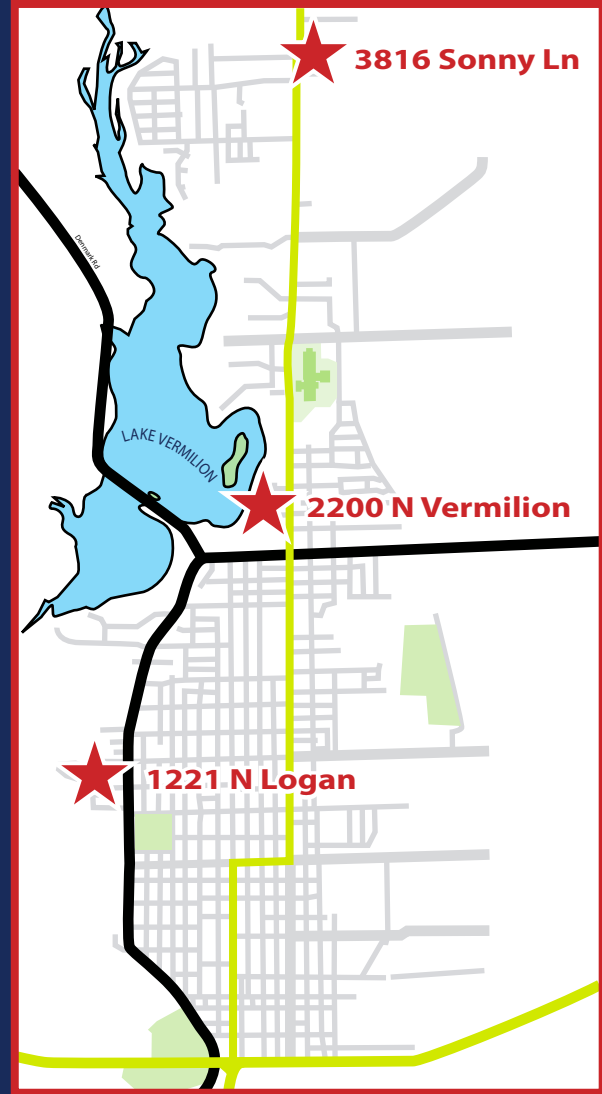
Heartland Properties Group
Office: 217-442-3266

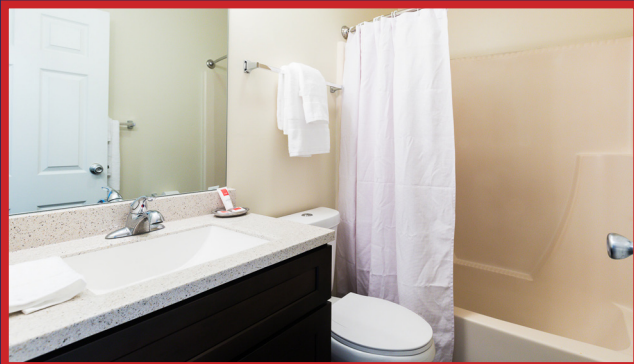


HEARTLAND PROPERTIES
Residential | Commercial | Agriculture

Locations close to:

- Grocery Stores
- Restaurants
- Shopping Centers
- Fitness Facilities
- Public Golf Course
- Rental Car Facilities
- Danville Airport





Lease a fully furnished apartment for a great living experience when you're away from home.

- Fully equipped kitchens with everything needed to make home-cooked meals
- Units stocked with bathroom amenities, fresh towels and bed linens
- On-site coin or pay-by-app laundry available
- Spacious living area with work space and bedroom with a queen size bed set
- Housekeeping services available
- Rates include all utilities and high speed internet



SPECIAL ON-DEMAND UNITS

ON-DEMAND two bedroom units available with a minimum of a 3 month commitment.

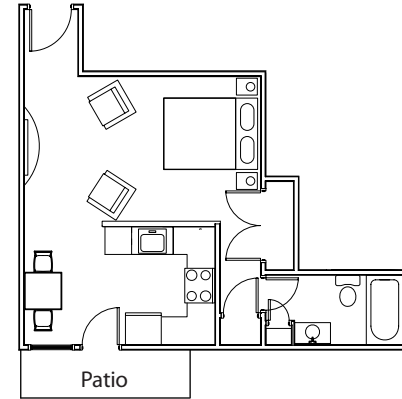


HEARTLAND PROPERTIES

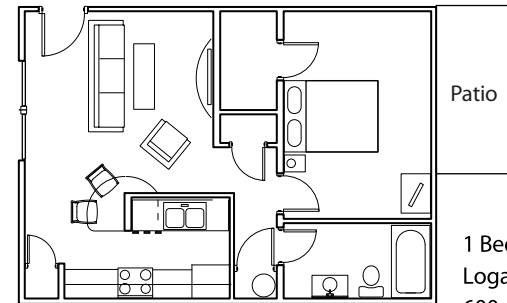
Office: 217-442-3266
 Learn More: www.heartlandpropertiesinc.net

Check Website for videos and availability
www.HeartlandPropertiesInc.net

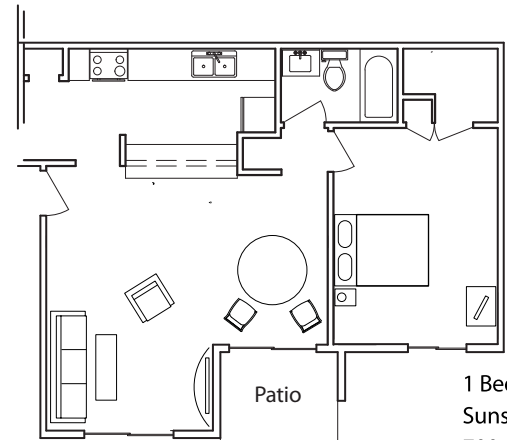
APPLY EARLY FOR BEST SELECTION



Efficiency
 Sonny Ln.
 460 sq. ft.



1 Bedroom
 Logan & Sonny Ln.
 600 sq. ft.



1 Bedroom
 Sunset Cove
 700 sq. ft.

Heartland Properties, Inc.